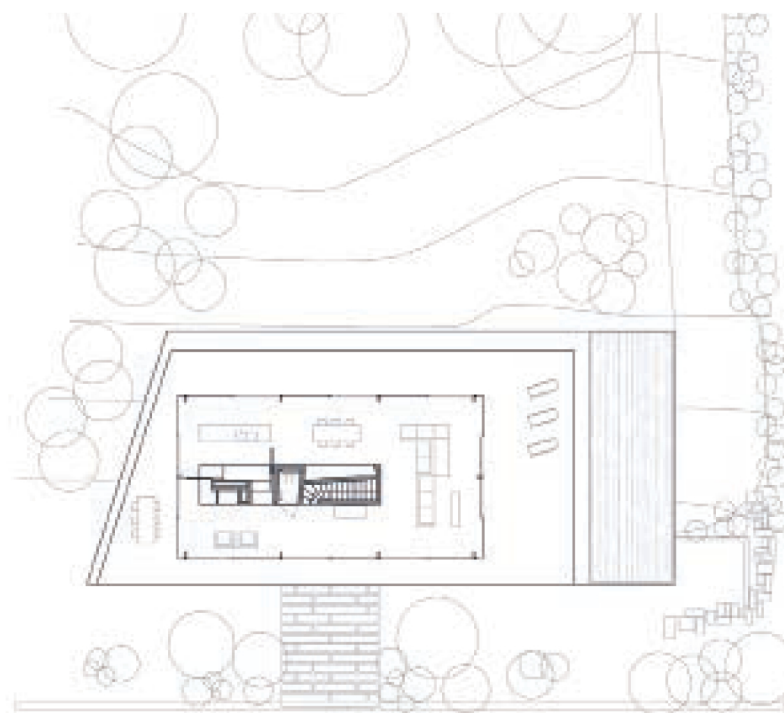


## CITY, PORTUGAL RAINHA

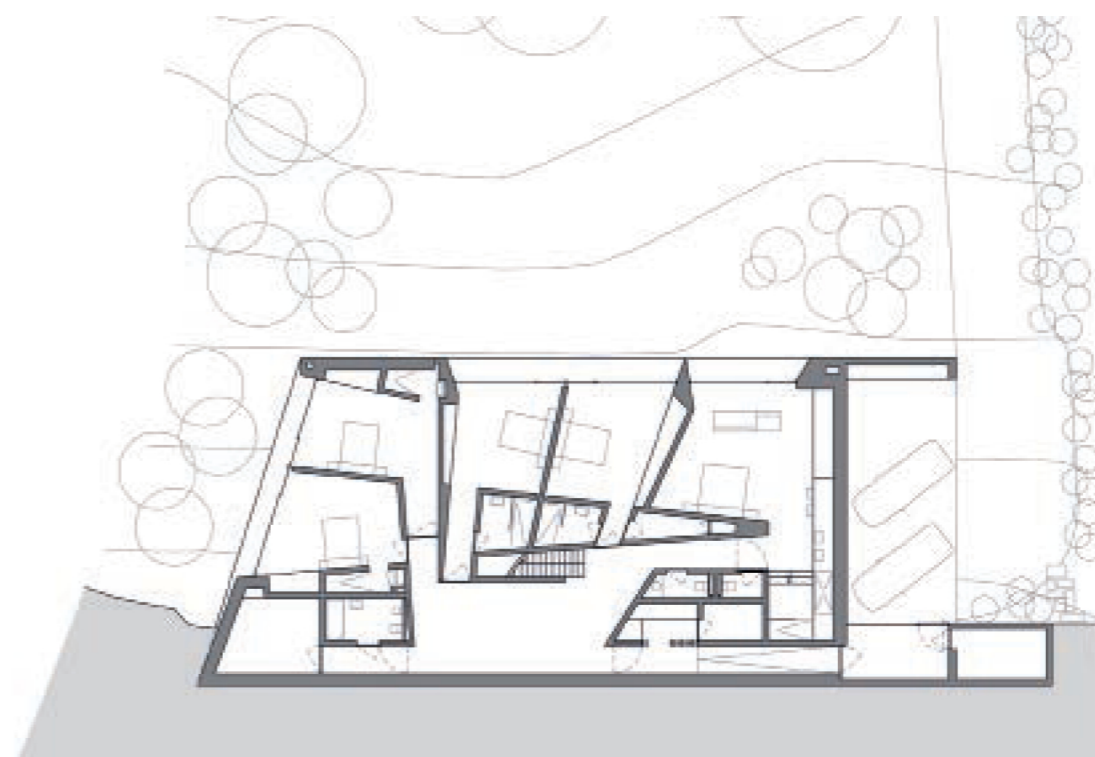
ARCHITECTS: AABE - ATELIER D'ARCHITECTURE BRUNO ERPICUM  
COMPLETION: 2011\_PHOTOS: SERGIO GUERRA/ FG+SG

Located on a hillside high above a lagoon, Rainha consists of two rectangular volumes on top of each other constructed of concrete and glass. On the upper level a small bungalow with a cantilevered roof houses the kitchen and dining room, living room and fireplace, offering 360-degree views of the surrounding countryside. Outside the volume, behind the glass curtain façades, polished concrete floors extend to all four cardinal points, offering stunning views into the landscape. Downstairs, the bedrooms are arranged around a central space, take advantage of the absence of orthogonal angles to create a dynamic atmosphere. The volume is characterized by the subtle distribution of light, which contributes to a calm and sublime atmosphere.



left: First floor plan\_Entrance. right: South elevation\_Bathroom\_View into bedrooms.





left: Basement. right: Basement plan\_Entrance to guestrooms\_View into living room\_Basement and staircase.

